

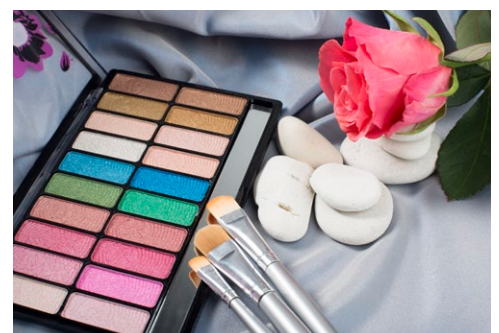
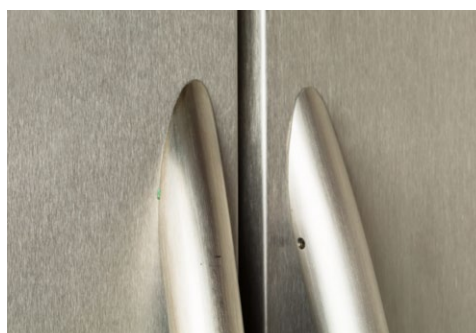


KONICA MINOLTA

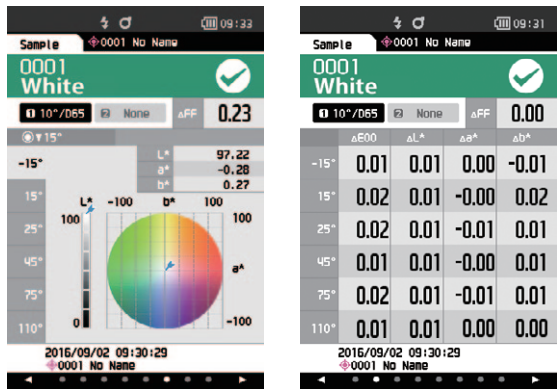


# Spectrophotometer **CM-M6**

**High precision, multi-angle model for  
measuring from 6 angles!**



Display examples

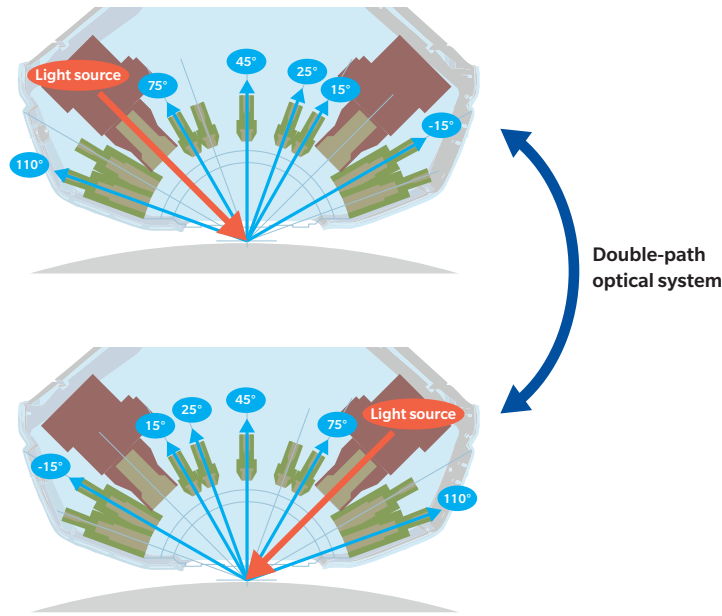


The CM-M6 has a built-in 3.5-inch color LCD that can display measured values both numerically and on colored graphs, for easier visualization of results.

The CM-M6 is a compact, lightweight, multi-angle spectrophotometer. Incorporating a new patented 'double-path optical system', it exhibits outstanding versatility in various measuring applications.



Multi-angle measurements (1 light source, 6 viewing angles)



Illumination angle: 45°  
Aspecular viewing angles: -15°, 15°, 25°, 45°, 75°, 110°  
\* These 6 viewing angles make it possible to detect metallic and pearl colors with higher accuracy than previous spectrophotometers.

Double-path optical system

The CM-M6 has duplicate illumination/viewing systems symmetrical about its center axis. This system ensures high measuring stability even when the instrument is slightly tilted and makes it possible to stably measure R300 curved surfaces like side mirrors.

Compact, lightweight, vertical format



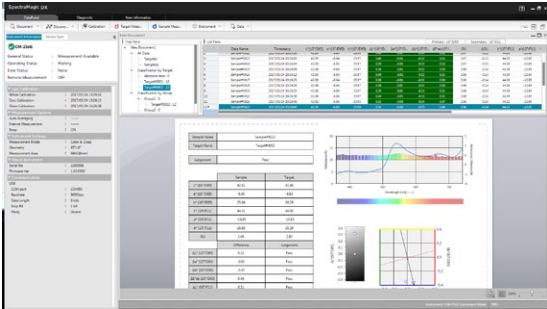
The compact body (with hand strap) can be stably held with one or two hands. Moreover, it is loaded with features ideal for measuring vehicle exteriors such as a rubber cover around the measurement aperture to safeguard measurement subjects against scratching and Bluetooth® support (option) for sending measurement data to remote devices over wireless connections.

Ø6 mm diameter viewing beam for measuring small surfaces

The viewing beam is 6 mm in diameter, so small surfaces that were hard to measure with earlier models can be stably measured.



(Option) Color Data Software SpectraMagic DX (Version. 1.2)  
Professional Edition  
Lite Edition



The new Color Data Software SpectraMagic DX enables easy management of data measured with the CM-M6, and offers a new Instrument Diagnosis function to help ensure continued high instrument performance.

OS : Windows® 7 Pro 32-bit / 64-bit (Windows®7 SP-1 or later)  
Windows® 8.1 Pro 32-bit / 64-bit  
Windows® 10 Pro 32-bit / 64-bit

CPU : Intel® Core i5 2.7GHz or higher (recommended)

Memory : At least 2 GB (4 GB or more recommended)

Hard disk : 20 GB of available hard disk space  
At least 10 GB of available disk space is required on the system drive (drive where the OS is installed) for database.

Display : Display hardware capable of displaying 1,280 x 768 pixels/16-bit color or better

Other : Two USB ports required for protection key if used. Not necessary for electronic license.  
USB or serial port required for connection to instrument.

Compatible Instruments : CM-M6, CM-25cG, CM-2500c, CM-700d, CM-600d, CM-2500d, CM-2600d, CM-3700A, CM-3700A-U, CM-3700d, CM-3600A, CM-3610A, CM-5, CR-5

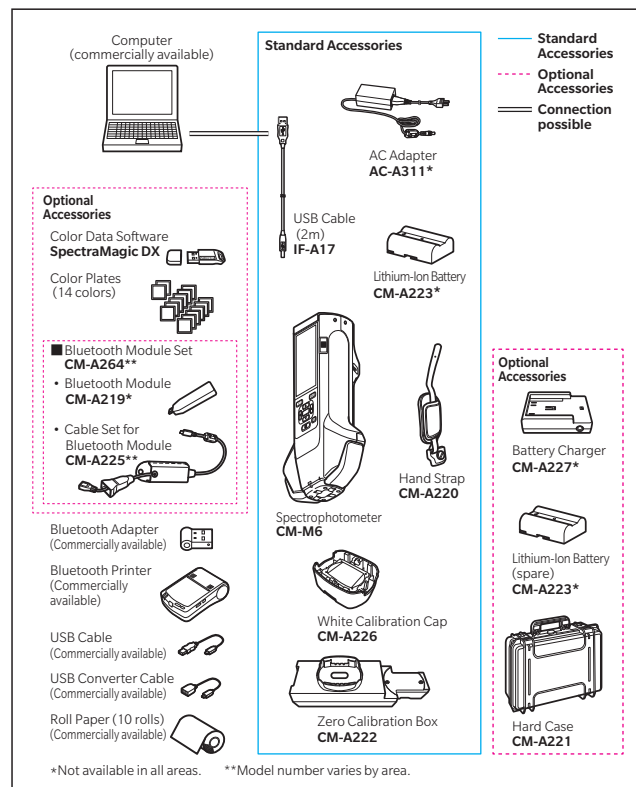
• Windows® is a trademark or registered trademark of Microsoft Corporation in the USA and other countries.  
• Intel® Core is a trademark or registered trademark of Intel Corporation in the USA and other countries.



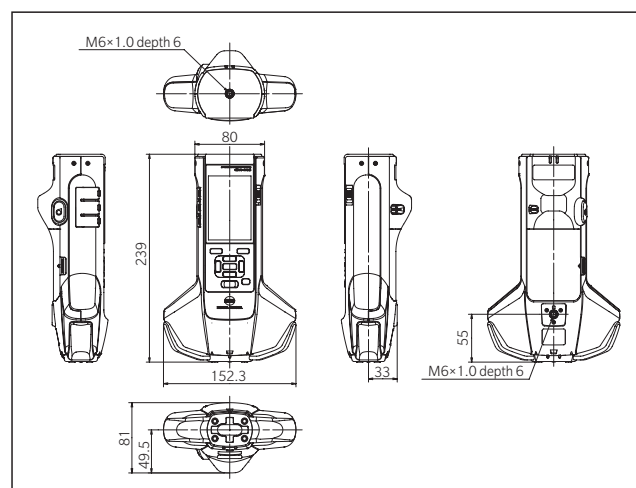
## Main Specifications

Model	Spectrophotometer CM-M6
Illumination/viewing system	45° illumination : -15°/15°/25°/45°/75°/110° aspecular viewing angles with double-path technology
Detector	Dual 40-element silicon photodiode arrays
Spectral separation device	Linear variable filter
Wavelength range	400-700 nm
Wavelength pitch	10 nm
Measurement range	6 angles: 0-600%; Output/display resolution :0.01 %
Light source	High-CRI white LED
Measurement time	Approx. 4.5 seconds
Minimum measurement interval	Approx. 5 seconds
Battery performance	Approx. 1,500 measurements/charge (at 10-second intervals at 23°C)
Measurement/illumination area	Ø6 mm/Ø12 mm
Repeatability	Chromaticity value :Standard deviation within $\Delta E^*ab$ 0.05 (When a white calibration plate is measured 30 times at 10-second intervals after white calibration)
Inter-instrument agreement	Within $\Delta E^*ab$ 0.2 (Average for 12 BCRA Series II color tiles compared to values measured with a master body under Konica Minolta standard measurement conditions)
Observer	2° or 10° Standard Observer
Illuminant	A, C, D50, D65, F2, F6, F7, F8, F10, F11, F12 User illuminant (simultaneous evaluation with two illuminants possible)
Displayed data	Colorimetric values, color-difference values/graph, line graph (colorimetric/color-difference values), pass/fail judgement
Colorimetric data	$L^*a^*b^*$ , $L^*C^*h$
Indexes	M1, FF value (Flop value)
Color-difference formula	$\Delta E^*ab$ (CIE 1976), $\Delta(L^*a^*b^*)$ , $\Delta(L^*C^*H^*)$ , CMC (l:c), $\Delta E^*94$ (CIE 1994), $\Delta E00$ (CIE DE2000), $\Delta E(DIN 6175)$ , $\Delta E99o(DIN 99o)$ , $\Delta E(Audi 2000)$
Data memory	Target data: 200 measurements; Sample data: 800 measurements
Pass/Fail judgement	Tolerances can be set for color-difference values
Displayed languages	Japanese, English, German, French, Italian, Spanish, Chinese (Simplified), Portuguese, Russian, Turkish, Polish
Display	3.5-inch TFT color LCD
Interfaces	USB2.0, Bluetooth (Option)
Power	Rechargeable lithium-ion battery (removable), dedicated AC adapter
Charging time	Approx. 5 hours when no charge remains
Operation temperature/humidity range	0-40 °C, relative humidity is 85% or less (at 35 °C) with no condensation
Storage temperature/humidity range	-20-45 °C, relative humidity is 85% or less (at 35 °C) with no condensation
Size (W×H×D)	Approx. 152 × 239 × 81 mm
Weight	Approx. 1.1 kg (Including battery)

## System Diagram



## Dimensions (Units : mm)



- KONICA MINOLTA, the Konica Minolta logo and symbol mark, "Giving Shape to Ideas" and SpectraMagic are registered trademarks or trademarks of Konica Minolta, Inc.
- Bluetooth® is a registered trademark of Bluetooth SIG, Inc. and is used under license agreement.
- Displays shown are for illustration purpose only.
- The specifications and appearance shown herein are subject to change without notice.



### SAFETY PRECAUTIONS

For correct use and for your safety, be sure to read the instruction manual before using the instrument.

- Always connect the instrument to the specified power supply voltage. Improper connection may cause a fire or electric shock.
- Be sure to use the specified batteries. Using improper batteries may cause a fire or electric shock.

### ISO Certifications of KONICA MINOLTA, Inc., Sakai Site



JQA-QMA15888  
Design, development, manufacture/  
manufacturing management, calibration, and  
service of measuring instruments



JQA-E-80027  
Design, development, manufacture, service and sales  
of measuring instruments

**KONICA MINOLTA, INC.**  
Konica Minolta Sensing Americas, Inc.  
Konica Minolta Sensing Europe B.V.

Osaka, Japan  
New Jersey, U.S.A.  
European Headquarter /BENELUX  
German Office  
French Office  
UK Office  
Italian Office  
Swiss Office  
Nordic Office  
Polish Office  
Turkish Office  
SE Sales Division  
Beijing Office  
Guangzhou Office  
Chongqing Office  
Qingdao Office  
Wuhan Office

**Konica Minolta (CHINA) Investment Ltd.**

**Konica Minolta Sensing Singapore Pte Ltd.**  
**Konica Minolta Sensing Korea Co., Ltd.**

Addresses and telephone/fax numbers are subject to change without notice. For the latest contact information, please refer to the KONICA MINOLTA Worldwide Offices web page :

**Phone** : 888-473-2656 (in USA), 201-236-4300 (outside USA)  
Nieuwegein, Netherlands  
München, Germany  
Roissy CDG, France  
Warrington, United Kingdom  
Cinisello Balsamo, Italy  
Dietikon, Switzerland  
Västra Frölunda, Sweden  
Wrocław, Poland  
Istanbul, Turkey  
Shanghai, China  
Beijing, China  
Guangdong, China  
Chongqing, China  
Shandong, China  
Hubei, China  
Singapore  
Goyang-si, Korea

**Phone** : +31 (0) 30 248-1193  
**Phone** : +49 (0) 89 4357 156 0  
**Phone** : +33 (0) 1 80 11 10 70  
**Phone** : +44 (0) 1925 467300  
**Phone** : +39 02849488.00  
**Phone** : +41 (0) 43 322-9800  
**Phone** : +46 (0) 31 7099464  
**Phone** : +48 (0) 71 73452-11  
**Phone** : +90 (0) 216-528 56 56  
**Phone** : +86- (0)21-5489 0202  
**Phone** : +86- (0)10-8522 1551  
**Phone** : +86- (0)20-3826 4220  
**Phone** : +86- (0)23-6773 4988  
**Phone** : +86- (0)532-8079 1871  
**Phone** : +86- (0)27-8544 9942  
**Phone** : +65 6563-5533  
**Phone** : +82 (0) 2-523-9726

**Fax** : 201-785-2482  
**Fax** : +31 (0) 30 24 81 211  
**Fax** : +49 (0) 89 4357 156 99  
**Fax** : +33 (0) 1 80 11 10 82  
**Fax** : +44 (0) 1925 711143  
**Fax** : +39 02849488.30  
**Fax** : +41 (0) 43 322-9809  
**Fax** : +48 (0) 71 734 52 10  
**Fax** : +90 (0) 212-253 49 69  
**Fax** : +86- (0)21-5489 0005  
**Fax** : +86- (0)10-8522 1241  
**Fax** : +86- (0)20-3826 4223  
**Fax** : +86- (0)23-6773 4799  
**Fax** : +86- (0)532-8079 1873  
**Fax** : +86- (0)27-8544 9991  
**Fax** : +65 6560-9721  
**Fax** : +82 (0) 31-995-6511

<https://konicaminolta.com/instruments/network>